

FPD2-0-10000-2-S

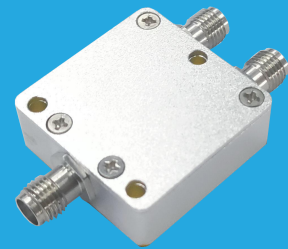
2-Way, DC~10GHz

Features:

- * Small Size
- * Low Insertion Loss

Applications:

- * Amplifiers
- * Mixers
- * Antennas
- * Laboratory Test



Electrical

Frequency:	DC~10GHz
Insertion Loss:	1.2dB max.
Input VSWR:	1.2 max.
Output VSWR:	1.2 max.
Isolation:	5.9dB min.
Amplitude Balance:	±0.6dB max.
Phase Balance:	±2°
Impedance:	50Ω
Average Power:	2W

Mechanical

Size ^{*1} :	28*28*10mm
	1.102*1.102*0.394in
Connectors ^{*2} :	SMA Female
Mounting:	3-Φ2.8mm through-hole

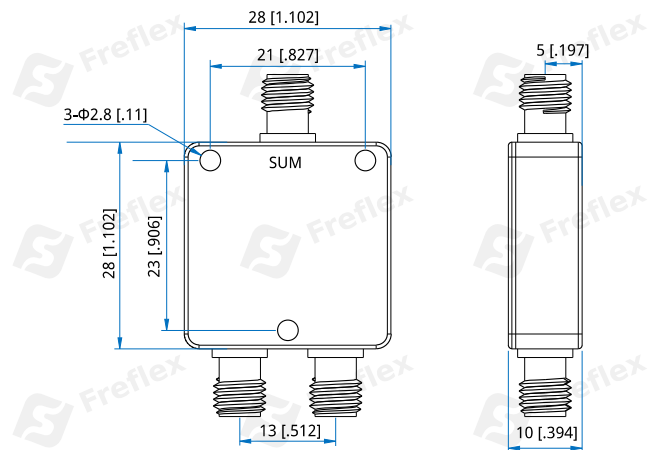
[1] Exclude connectors.

[2] Female connectors can be replaced with male connectors on request.

Environmental

Operating Temperature:	-35~+75°C
Non-operating Temperature:	-45~+85°C

Outline Drawings



Unit: mm [in]

Tolerance: ±0.5mm [±0.02in]

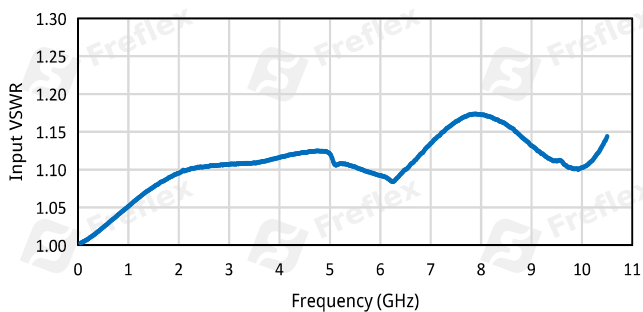
How To Order

FPD2-0-10000-2-S

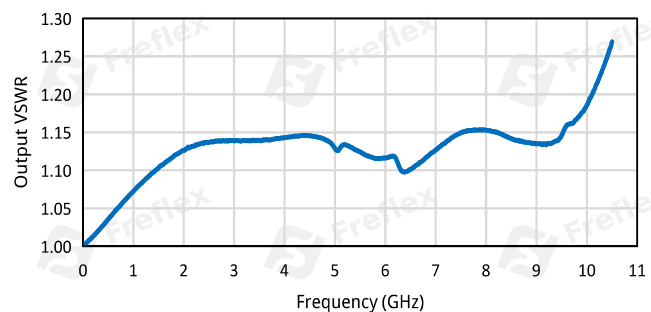
Customization is available upon request.

Typical Performance Curves

Input VSWR vs. Frequency

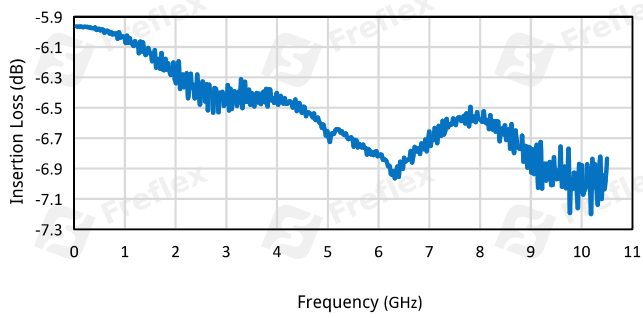


Output VSWR vs. Frequency

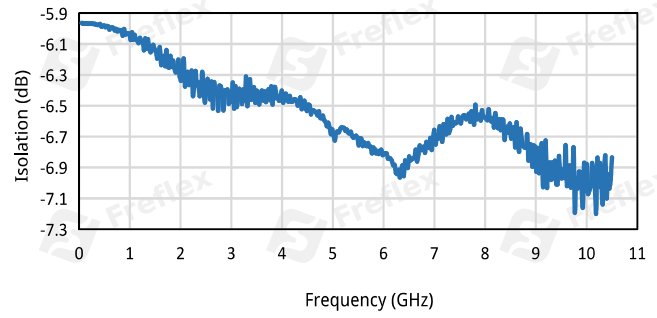


2-Way Resistor Power Divider

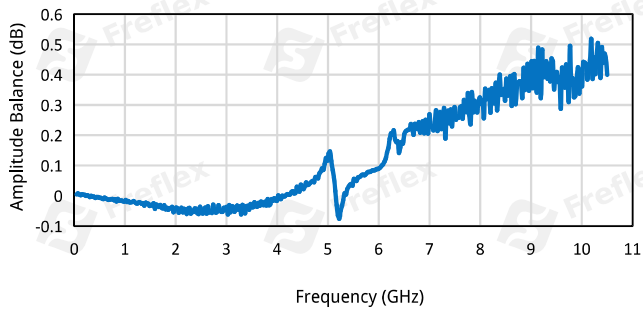
Insertion Loss vs. Frequency



Isolation vs. Frequency



Amplitude Balance vs. Frequency



Phase Balance vs. Frequency

