

### FPD2-100-3000-30

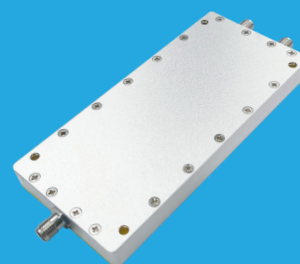
2-Way, 0.1~3GHz

#### Features:

- \* Small Size
- \* Low Insertion Loss

#### Applications:

- \* Amplifiers
- \* Mixers
- \* Antennas
- \* Laboratory Test



#### Electrical

Frequency:	0.1~3GHz
Insertion Loss:	2.1dB max.
Input VSWR:	1.25 max.
Output VSWR:	1.2 max.
Isolation:	20dB min.
Amplitude Balance:	±0.1dB max.
Phase Balance:	±2°
Impedance:	50Ω
Power @SUM Port:	30W max. as divider 2W max. as combiner

#### Mechanical

Size <sup>*1</sup> (SMA):	110*50*11mm 4.331*1.969*0.433in
Connectors <sup>*2</sup> :	SMA Female SMP Male
Mounting:	4-Φ3.2mm through-hole

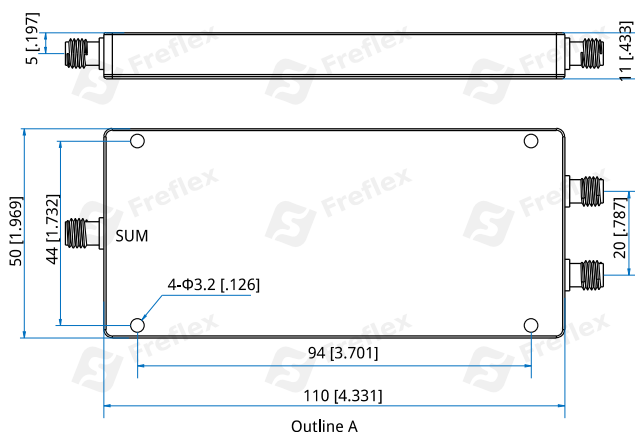
[1] Exclude connectors.

[2] Female connectors can be replaced with male connectors on request.

#### Environmental

Operation Temperature:	-45~+85°C
Non-operating Temperature:	-55~125°C

#### Outline Drawings



Unit: mm [in]

Tolerance: ±0.5mm [±0.02in]

#### How To Order

**FPD2-100-3000-30-Y**

Y: Connector type

Connector naming rules:

S - SMA Female (Outline A)

P - SMP Male

Examples:

To order a 2-way power divider, 0.1~3GHz, 30W, SMA female, specify FPD2-100-3000-30-S.

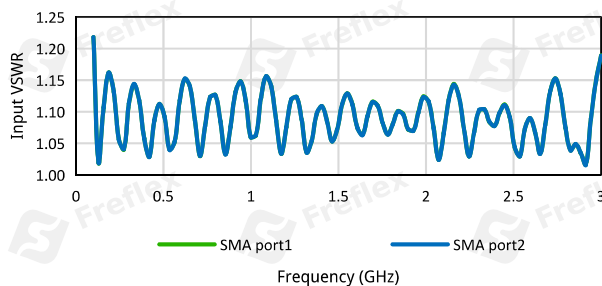
Customization is available upon request.

### Typical Performance Curves

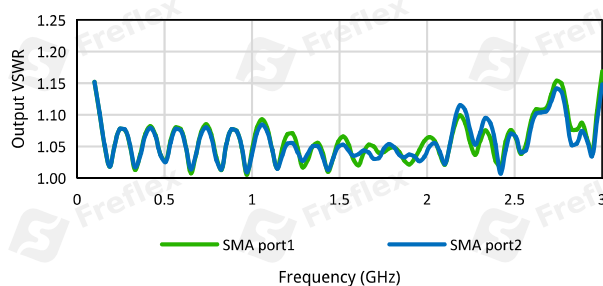
SMA

SMA

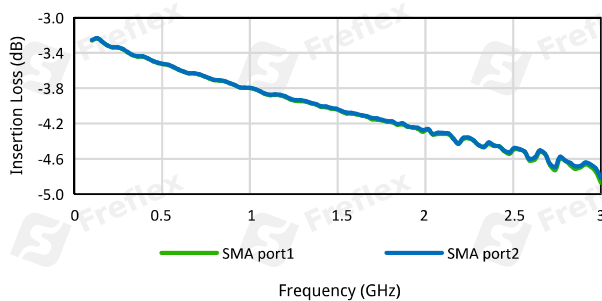
Input VSWR vs. Frequency



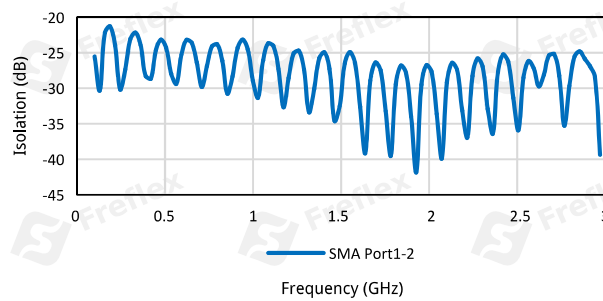
Output VSWR vs. Frequency



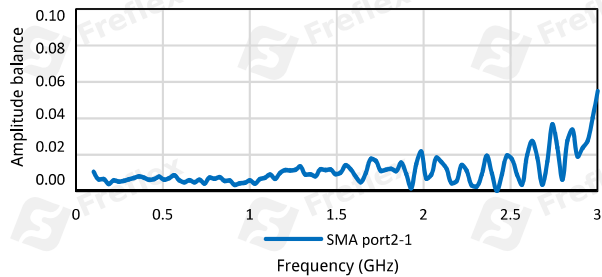
Insertion Loss vs. Frequency



Isolation vs. Frequency



Amplitude balance vs. Frequency



Phase balance vs. Frequency

