

### FPD2-400-2700-30

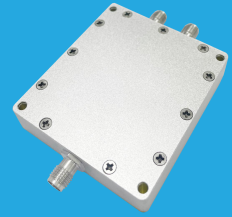
2-Way, 0.4~2.7GHz

#### Features:

- \* Small Size
- \* Low Insertion Loss

#### Applications:

- \* Amplifiers
- \* Mixers
- \* Antennas
- \* Laboratory Test



#### Electrical

Frequency:	0.4~2.7GHz
Insertion Loss:	0.8dB max.
Input VSWR:	1.2 max.
Output VSWR:	1.2 max.
Isolation:	22dB min.
Amplitude Balance:	±0.1dB max.
Phase Balance:	±1°
Impedance:	50Ω
Power @SUM Port:	30W max. as divider 2W max. as combiner

#### Mechanical

Size <sup>*1</sup> :	56*50*12mm 2.205*1.969*0.472in
Weight:	68.3g
Connectors <sup>*2</sup> :	SMA Female SMP Male
Mounting:	4-Φ2.8mm through-hole

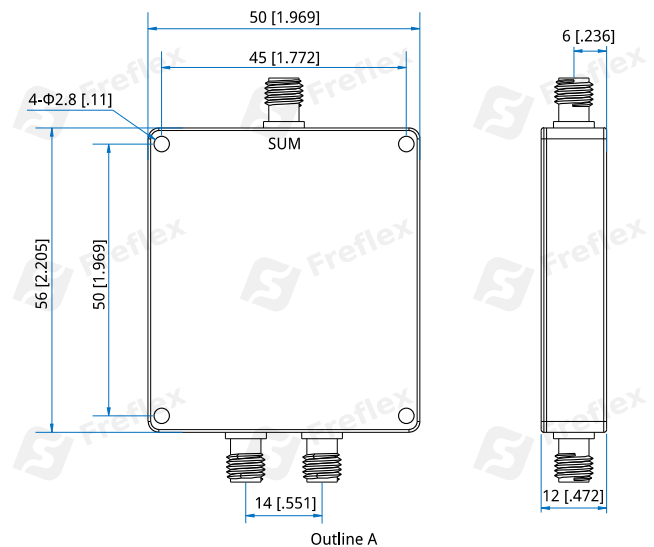
[1] Exclude connectors.

[2] Female connectors can be replaced with male connectors on request.

#### Environmental

Operating Temperature:	-35~+75°C
Non-operating Temperature:	-45~+85°C

#### Outline Drawings



Unit: mm [in]

Tolerance: ±0.5mm [±0.02in]

#### How To Order

**FPD2-400-2700-30-Y**

Y: Connector type

Connector naming rules:

S - SMA Female (Outline A)

P - SMP Male

Examples:

To order a 2-way power divider, 0.4~2.7GHz, 30W, SMA female, specify FPD2-400-2700-30-S.

Customization is available upon request.

### Typical Performance Curves

#### SMA

