

## FPD4-100-2000-30

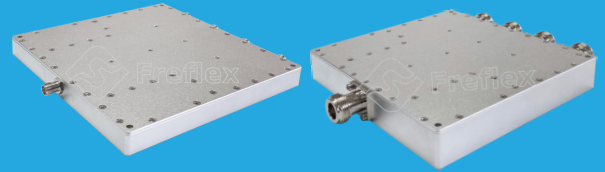
4-Way, 0.1~2GHz

**Features:**

- \* Small Size
- \* Low Insertion Loss

**Applications:**

- \* Amplifiers
- \* Mixers
- \* Antennas
- \* Laboratory Test



### Electrical

Frequency:	0.1~2GHz
Insertion Loss*1:	2.4dB max.
Input VSWR:	1.35 max.
Output VSWR:	1.25 max.
Isolation:	19dB min.
Amplitude Balance:	±0.3dB typ.
Phase Balance:	±3° typ.
Impedance:	50Ω
Power @SUM Port:	30W max. as divider 2W max. as combiner

[1] Excluding theoretical loss 6dB.

### Mechanical

Connectors:	SMA Female, N Female, TNC Female
Mounting:	4-Φ3.2mm through-hole

### Environmental

Operation Temperature:	-45~+85°C
Non-operating Temperature:	-55~+125°C

### How To Order

**FPD4-100-2000-30-X**

X: Connector type

Connector naming rules:

S - SMA Female (Outline A)

N - N Female (Outline B)

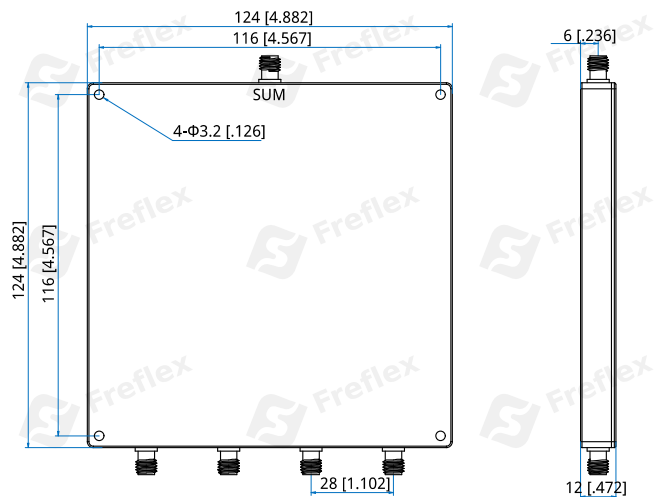
T - TNC Female (Outline B)

Examples:

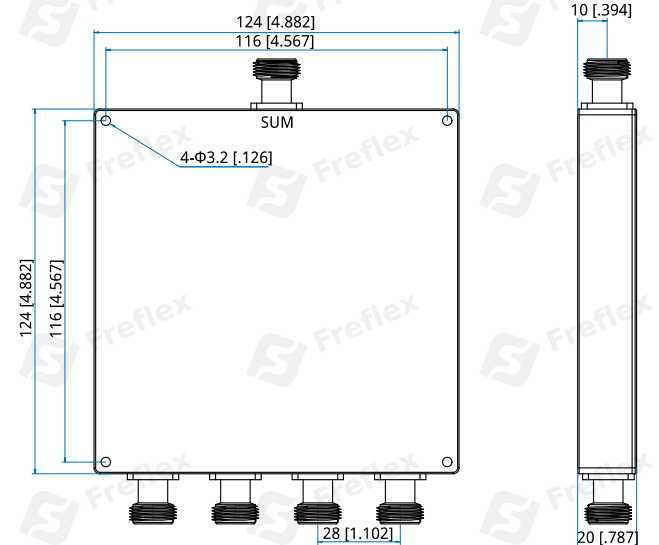
To order a 4-way power divider, 0.1~2GHz, 30W, N female, specify FPD4-100-2000-30-N.

Customization is available upon request.

### Outline Drawings



Outline A

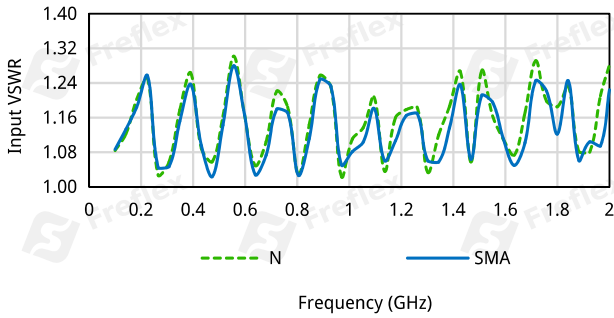


Outline B

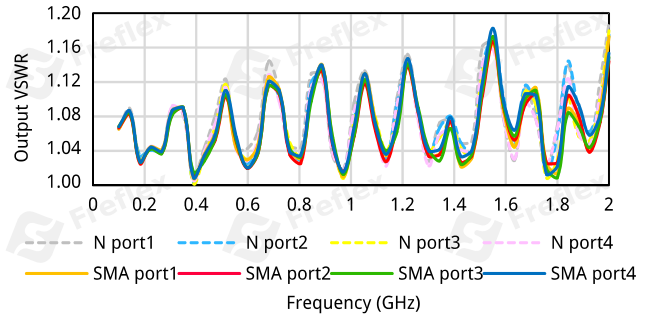
Unit: mm [in]  
Tolerance: ±0.5mm [±0.02in]

## Typical Performance Curves

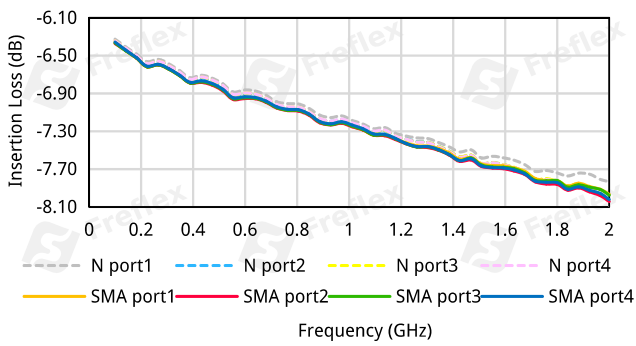
Input VSWR vs. Frequency



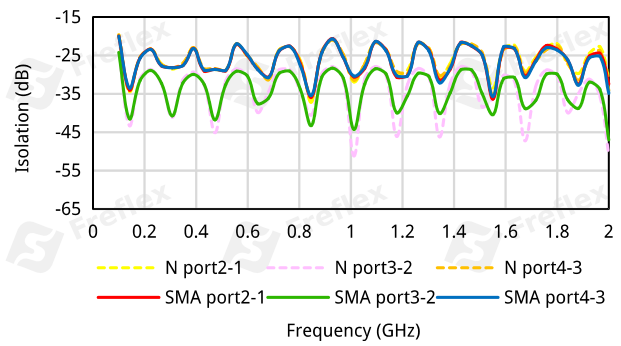
Output VSWR vs. Frequency



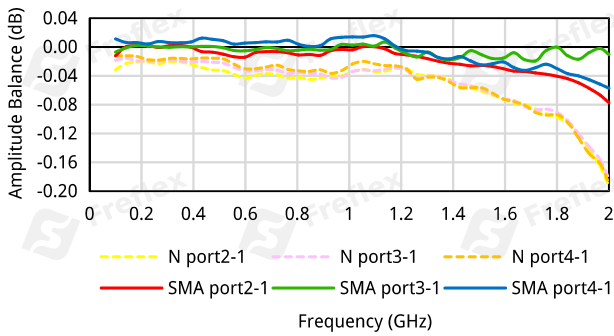
Insertion Loss vs. Frequency



Isolation vs. Frequency



Amplitude Balance vs. Frequency



Phase Balance vs. Frequency

