

## FPD4-800-2500-30

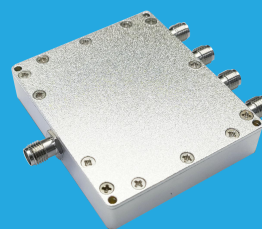
4-Way, 0.8~2.5GHz

### Features:

- \* Small Size
- \* Low Insertion Loss

### Applications:

- \* Amplifiers
- \* Mixers
- \* Antennas
- \* Laboratory Test



### Electrical

Frequency:	0.8~2.5GHz
Insertion Loss:	0.5dB max.
Input VSWR:	1.3 max.
Output VSWR:	1.2 max.
Isolation:	20dB min.
Amplitude Balance:	±0.2dB
Phase Balance:	±0.5°
Impedance:	50Ω
Power @SUM Port:	30W max. as divider 2W max. as combiner

### Mechanical

Size <sup>*1</sup> :	58*50*12mm 2.283*2.205*0.472in
Connectors <sup>*2</sup> :	SMA Female SMP Male
Mounting:	4-Φ2.2mm through-hole

[1] Exclude connectors.

[2] Female connectors can be replaced with male connectors on request.

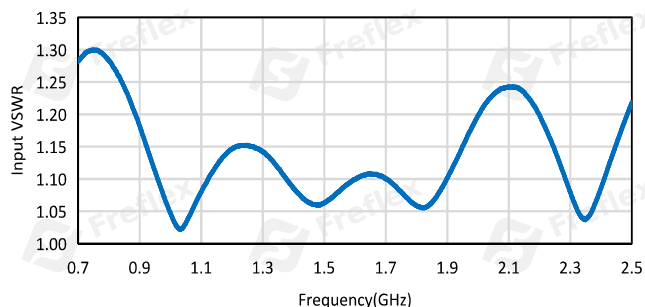
### Environmental

Operating Temperature:	-45~+85°C
Non-operating Temperature:	-55~+95°C

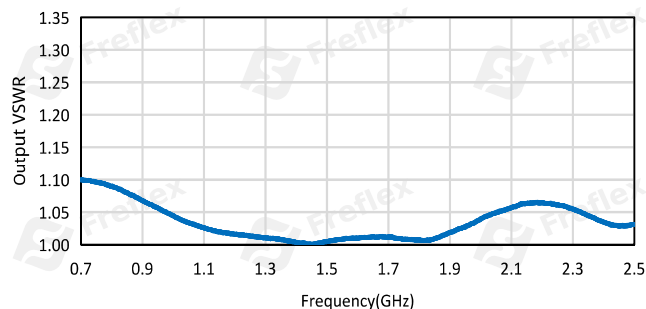
### Typical Performance Curves

#### SMA

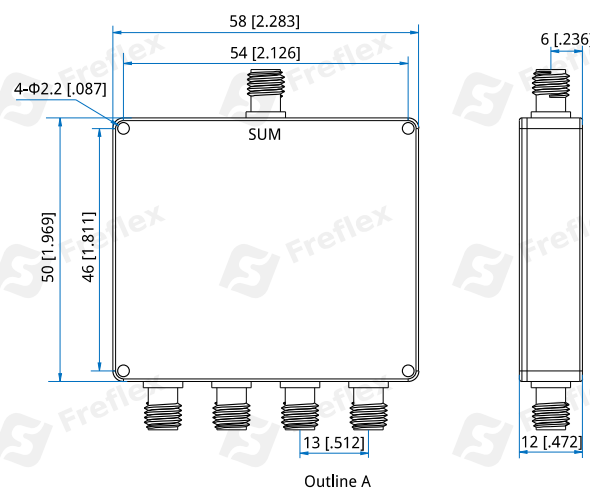
Input VSWR vs. Frequency



Output VSWR vs. Frequency



### Outline Drawings

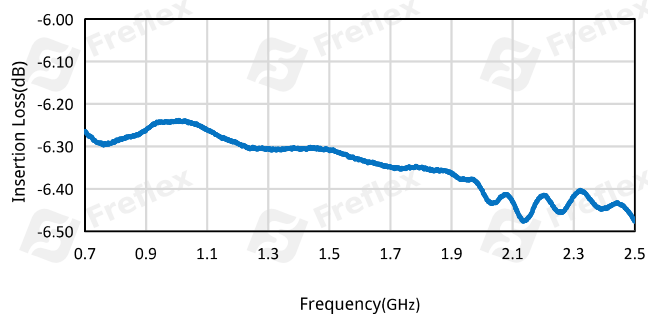


Unit: mm [in]

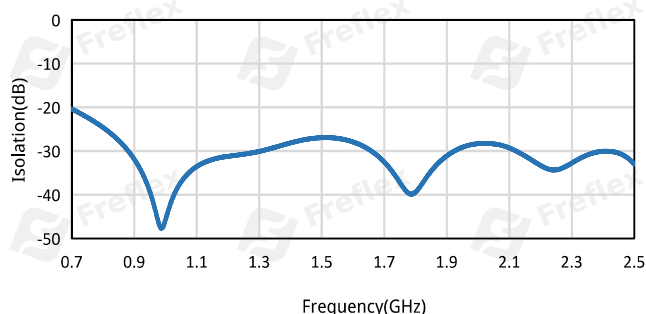
Tolerance: ±0.5mm [±0.02in]

## 4-Way Power Divider/Combiner

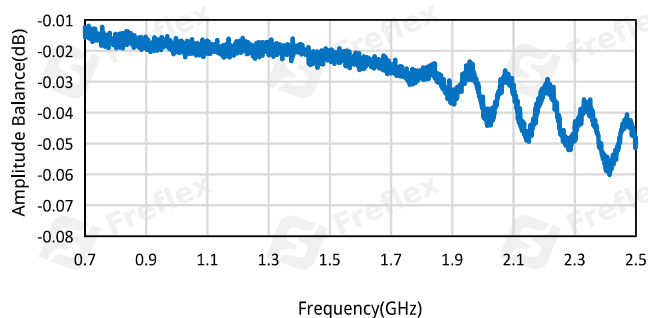
Insertion Loss vs. Frequency



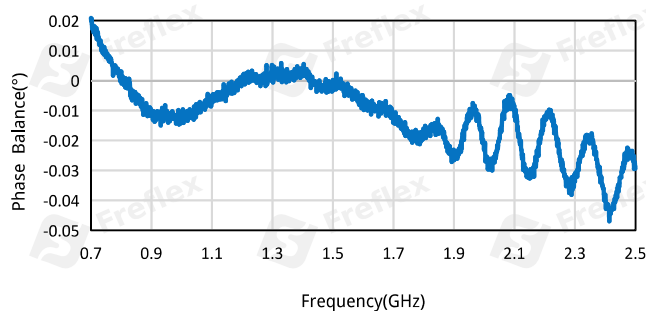
Isolation vs. Frequency



Amplitude Balance vs. Frequency



Phase Balance vs. Frequency



### How To Order

**FPD4-800-2500-30-Y**

Y: Connector type

Connector naming rules:

S - SMA Female (Outline A)

P - SMP Male

Examples:

To order a 4-way power divider, 0.8~2.5GHz, 30W, SMA female, specify FPD4-800-2500-30-S.

Customization is available upon request.