

## FPD8-1000-6000-30

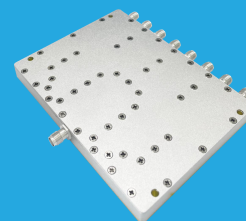
8-Way, 1~6GHz

### Features:

- \* Small Size
- \* Low Insertion Loss

### Applications:

- \* Amplifiers
- \* Mixers
- \* Antennas
- \* Laboratory Test



### Electrical

Frequency:	1~6GHz
Insertion Loss:	1.8dB max.
Input VSWR:	1.3 max.
Output VSWR:	1.2 max.
Isolation:	20dB min.
Amplitude Balance:	±0.1dB
Phase Balance:	±3°
Impedance:	50Ω
Power @SUM Port:	30W max. as divider 2W max. as combiner

### Mechanical

Size <sup>*1</sup> :	110*82*10mm 4.331*3.228*0.394in
Connectors <sup>*2</sup> :	SMA Female ( Passivated Stainless Steel) SMP Male
Mounting:	4-Φ3.2mm through-hole

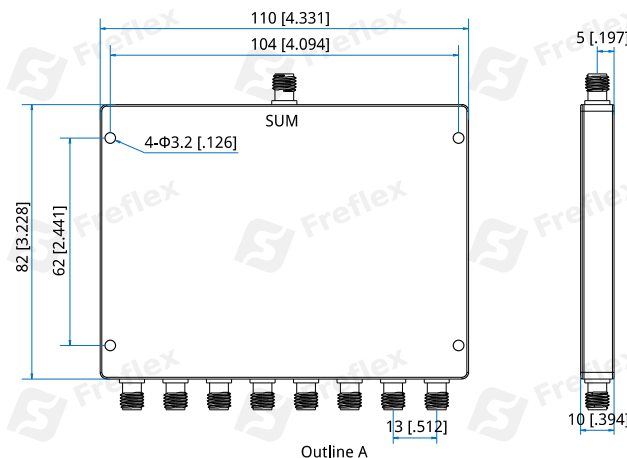
[1] Exclude connectors.

[2] Female connectors can be replaced with male connectors on request.

### Environmental

Operation Temperature:	-45~+85°C
Non-operating Temperature:	-55~+125°C

### Outline Drawings



Unit: mm [in]

Tolerance: ±0.5mm [±0.02in]

### How To Order

**FPD8-1000-6000-30-Y**

Y: Connector type

Connector naming rules:

S - SMA Female (Outline A)

P - SMP Male

Examples:

To order a 8-way power divider, 1~6GHz, 30W, SMA female, specify FPD8-1000-6000-30-S.

Customization is available upon request.

## 8-Way Power Divider/Combiner

### Typical Performance Curves

#### SMA

