

FCPF-MB-B38-01

SMP Connector, DC~18GHz

Features:
* Low VSWR

Applications:
* Wireless
* Radar
* Instruments
* Electronics

Electrical

| | |
|--------------------------|-------------|
| Frequency: | DC~18GHz |
| Impedance of Dielectric: | 5000MΩ min. |
| Voltage Withstand: | 500V DC |
| Impedance: | 50Ω |

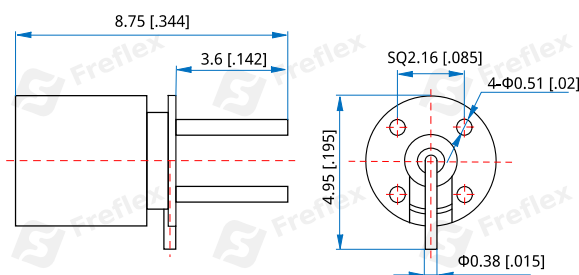
Mechanical

| | |
|--------------------|------------------------------|
| RF Connector: | SMP Male |
| Mating Life Cycle: | 100 cycles |
| Detent mode: | Full detent |
| Outer Conductor: | Gold Plated Brass |
| Dielectric: | PEEK |
| Inner Conductor: | Gold Plated Beryllium Copper |

Environmental

| | |
|--------------|------------|
| Temperature: | -55~+165°C |
|--------------|------------|

Outline Drawings



Unit: mm [in]

Tolerance: ±0.2mm [±0.008in]

How To Order

FCPF-MB-B38-01

Customization is available upon request.