

FELC-1F-4

1.0mm Female, DC~110GHz

Features:

- * Low VSWR

Applications:

- * Wireless
- * Radar
- * Instruments
- * Electronics

Electrical

Frequency:	DC~110GHz
VSWR:	1.3 max. @DC~40GHz
	1.45 max. @40~67GHz
	2 max. @67~110GHz
Insertion Loss:	0.05x \sqrt{f} (GHz) dB max.
Impedance:	50 Ω

Mechanical

RF Connector:	1.0mm Female
Outer Conductor:	Passivated stainless steel
Inner Conductor:	Gold plated beryllium copper
Insulator:	PEI or equivalent
Body & Plate:	Gold plated brass

Environmental

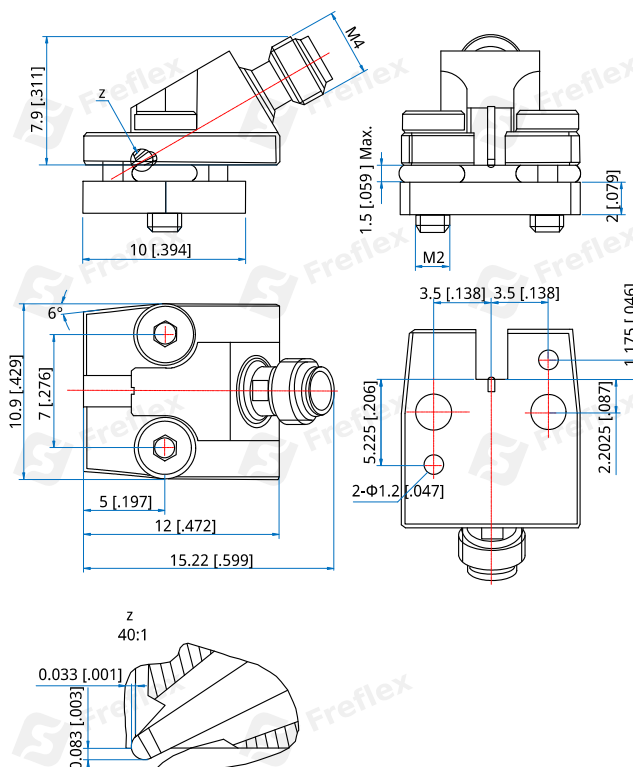
Temperature: -40~+85°C

How To Order

FELC-1 F-4

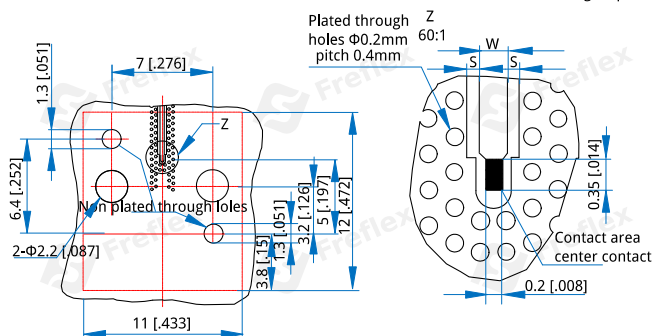
Customization is available upon request.

Outline Drawings



PCB Layout

S = Space/Gap between signaling path and ground plane
W = width of signal path



Unit: mm [in]

Tolerance: $\pm 0.2\text{mm}$ [$\pm 0.008\text{in}$]