

FSDC-10-1000-K2

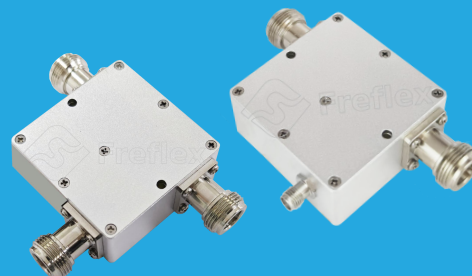
0.01~1GHz, 200W, 40dB

Features:

- * Low Insertion Loss

Applications:

- * Amplifiers
- * Transmitter
- * Laboratory Test
- * Radar



Electrical

Frequency:	0.01~1GHz
Insertion Loss:	0.4dB max.
VSWR (Mainline):	1.25 max.
VSWR (Coupling):	1.35 max.
Directivity:	20dB min.
Coupling:	40±1.5dB
Average Power:	200W
Impedance:	50Ω

Mechanical

Size ^{*1} :	50.8*50.8*22.35mm 2*2*0.88in
Connectors:	N female, SMA female
Mounting:	2-Φ3.2mm through-hole

[1] Exclude connectors and termination

Environmental

Operating Temperature:	-40~+85°C
Non-operating Temperature:	-55~+100°C

How To Order

FSDC-10-1000-K2-X-Y

X: Coupling

Y: Connector type

Connector naming rules:

N - N female (Outline A)

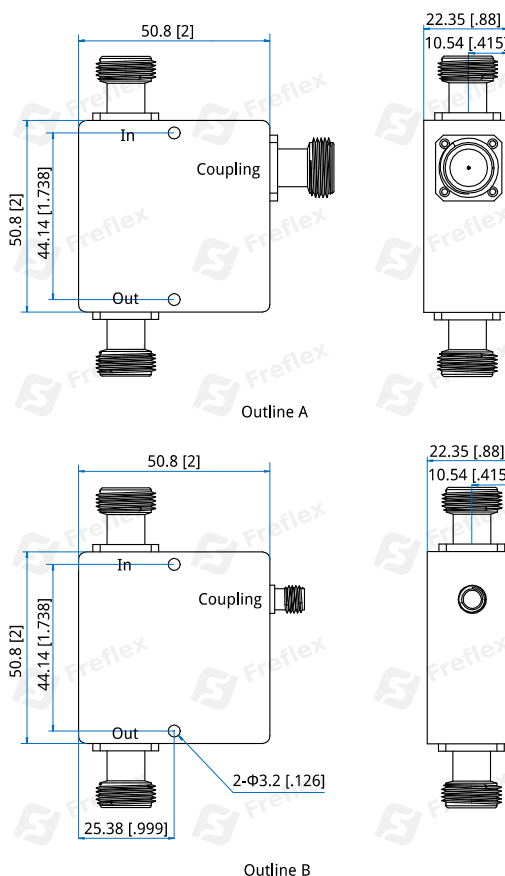
NS - N female & SMA female (Outline B)

Examples:

To order a Single directional coupler, 0.1~1000MHz, 200W, 40dB, N female & SMA female, specify QDDC-10-1000-K2-40-NS.

Customization is available upon request.

Outline Drawings

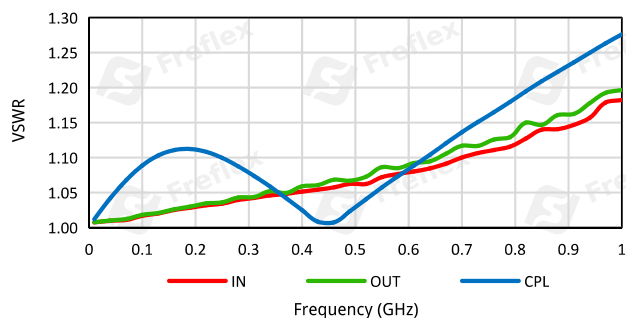


Unit: mm [in]

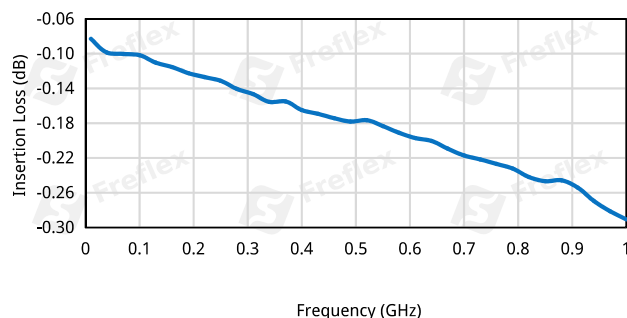
Tolerance: ±0.3mm [±0.012in]

Typical Performance Curves

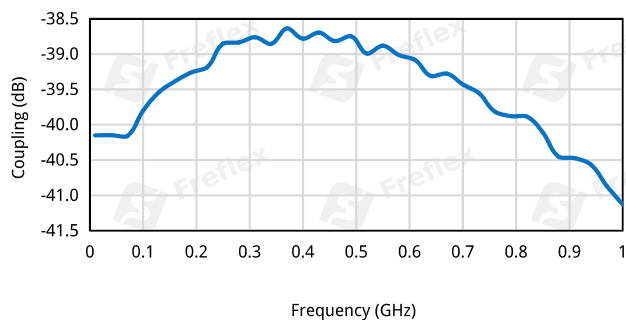
VSWR vs. Frequency



Insertion Loss vs. Frequency



Coupling vs. Frequency



Directivity vs. Frequency

