

FWI-110000-170000-R5

D-band, 110~170GHz, 0.5W

Features:

- * Broadband
- * High Isolation
- * Low Insertion Loss

Applications:

- * Wireless
- * Radar
- * Laboratory Test

Electrical

Frequency:	110~170GHz
Insertion Loss:	3.5dB max.
Isolation:	16dB min.
VSWR:	1.5 typ.
Power:	0.5W CW max.

Absolute Maximum Ratings*1

RF Input Power: +27dBm

[1] Permanent damage may occur if any of these limits are exceeded.

Mechanical*2

Interface*3:	WR-6
Flange:	UG-387/UM anti-cocking
Material:	Copper
Finish:	Gold-plating
Weight:	65g

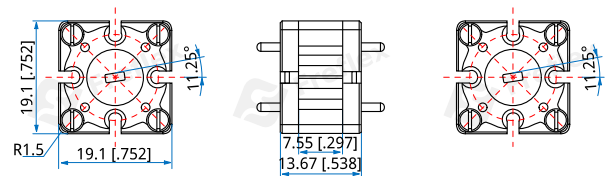
[2] The isolator is magnetic sensitive device, keep it 2inch away from the strong magnetic fields.

[3] The input and output waveguides have some slanted direction, but it doesn't effect the performance, and it can be connected to the standard waveguide directly.

Environmental

Operating Temperature:	-40~+85°C
Non-operating Temperature:	-55~+105°C

Outline Drawings



Unit: mm [inch]

Tolerance: ±0.3mm [±0.012in]

How To Order

FWI-110000-170000-R5

Customization is available upon request.