

## FWI-60000-90000-1

E-band, 60~90GHz, 1W

### Features:

- \* Broadband
- \* High Isolation
- \* Low Insertion Loss

### Applications:

- \* Wireless
- \* Radar
- \* Laboratory Test

### Electrical

Frequency:	60~90GHz
Insertion Loss:	2dB max.
Isolation:	18dB min.
VSWR:	1.5 typ.
Power:	1W CW max.

### Mechanical\*1

Interface*2:	WR-12 (BJ740)
Flange:	UG-387/U anti-cocking
Material:	Copper
Finish:	Gold-plating
Weight:	65g

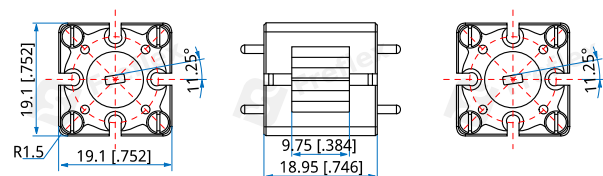
[1] The isolator is magnetic sensitive device, keep it 2inch away from the strong magnetic fields.

[2] The input and output waveguides have some slanted direction, but it doesn't effect the performance, and it can be connected to the standard waveguide directly.

### Environmental

Operating Temperature: -40~+85°C

### Outline Drawings



Unit: mm [inch]

Tolerance:  $\pm 0.3\text{mm}$  [ $\pm 0.012\text{in}$ ]

### How To Order

**FWI-60000-90000-1**

Customization is available upon request.